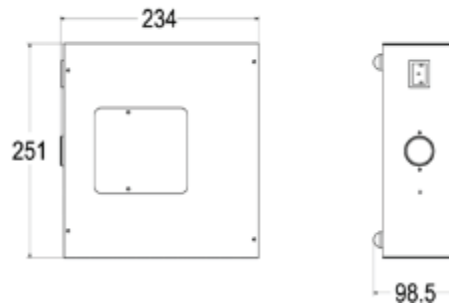




## 100 Watt halogen illuminator

10-523



**Designed expressly for Museums**

**No light leaks - perfect for case top position**

**Black powder coating**

**Electronic transformer, dimmable by external dimmer**

**Maximum lamp wattage - 100W**

**Cooling by fan ventilation, exhaust vent kit optional**

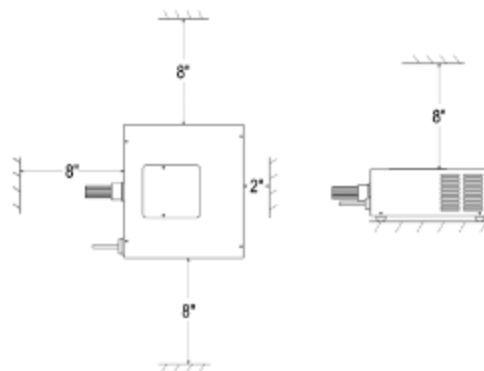
**High reliability**

**Delivered with 100W lamp**

**Minimum space between the illuminator and the case walls**

Preferably used on the top of the display case or if under the case in a compartment, with a minimum of 10 cubic feet volume and 5 inches bottom opening and 5 inches top opening

Multiple illuminators require the addition of exhaust fans





## 100 Watt halogen illuminator 10-523

		10-522	10-523
Voltage	V	220-240	115-130
Frequency	Hz	50	60
Power consumption	W	100	
Electric class		Class I	
Protection index		IP20	
Transformer with thermal fuse		Electronic	
Lamp type		12V 100W Luxam 19-143	
Lamp wattage	W	35 - 100 Maximum	
Color temperature	K	3000	
Life	h	2000	
Light level measured the fiber end	Lux	240 lux (CAX1,5) / 426 lux (CAX2)	
Maximum number of tails (2)		35 fibers CAX1,5 / 20 fibers CAX2	
Number of tails for optimum result (2)		26 fibers CAX1,5 / 16 fibers CAX2	
Infrared filter		yes	
UV filter		yes	
Filter holder		yes	
Filter dimensions	mm	45x45x1,5	
Operating temperature	°C	+5 < ta < +40	
Dimensions	Mm / <b>inch</b>	134.5 x 231 x 79.5 / <b>9.88 x 9.25 x 4</b>	
Weight	Kgs / <b>lbs</b>	2.7Kg / 6 Lb	