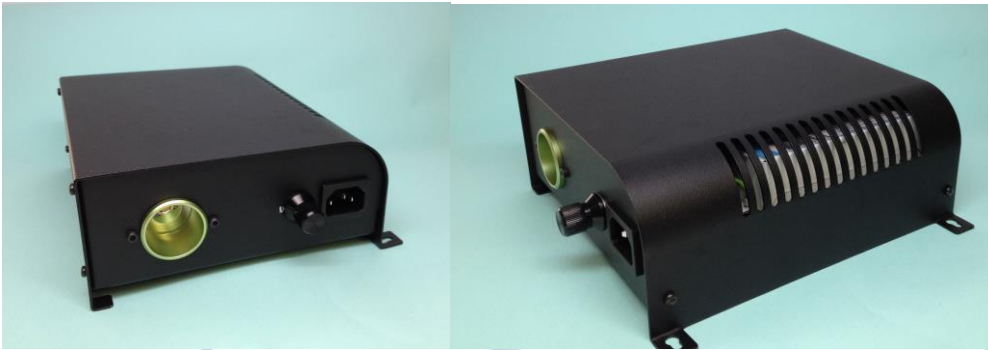


Luxam

Lighting for Museums

Compact LED illuminator 15-130



The compact size allows for installation in small technical spaces

Sheet Steel case 1mm black powder coated – no light leaks

Built in rotary dimer 10-100%

Multi-voltage 120V to 240V

Total power consumption – 35 watts

Available in 3000 and 4000 K – CRI >90

40000 hour life span

Dimensions – (LxWXH) 8.5 x 7.5 x 3"

Weight – 3 Lb.

Operating temperature - +5 <ta < +40

12209 NW 35 St
Coral Springs, FL 33065
www.luxam.com e-mail: info@luxam.com